

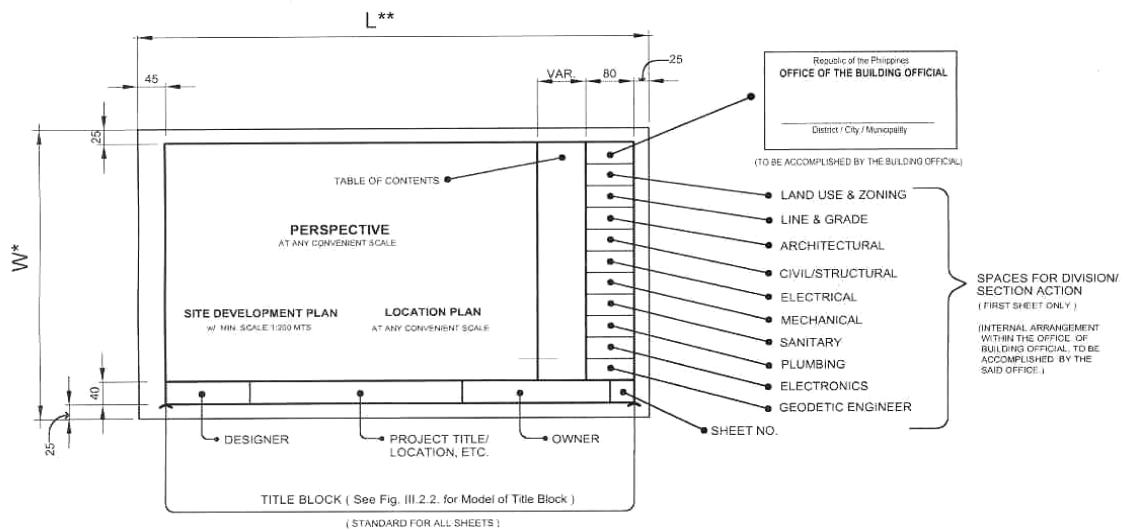
Attachment 1.1

Sections 302.3 and 302.4 (covered by Injunction) Under the 2004 Revised Implementing Rules and Regulations (IRR) of the National Building Code of the Philippines/ NBCP (otherwise known as Presidential Decree/ PD 1096 of 1977)

SECTION 302. Application for Permits

3. Five (5) sets of survey plans, design plans, specifications and other documents prepared, signed and sealed over the printed names of the duly licensed and registered professionals (Figs. III.1. and III.2.):
 - a. Geodetic Engineer, in case of lot survey plans;
 - b. Architect, in case of architectural documents; in case of architectural interior/interior design documents, either an architect or interior designer may sign;
 - c. Civil Engineer, in case of civil/structural documents;
 - d. Professional Electrical Engineer, in case of electrical documents;
 - e. Professional Mechanical Engineer, in case of mechanical documents;
 - f. Sanitary Engineer, in case of sanitary documents;
 - g. Master Plumber, in case of plumbing documents;
 - h. Electronics Engineer, in case of electronics documents.
4. Architectural Documents
 - a. Architectural Plans/Drawings
 - i. Vicinity Map/Location Plan within a 2.00 kilometer radius for commercial, industrial, and institutional complex and within a half-kilometer radius for residential buildings, at any convenient scale showing prominent landmarks or major thoroughfares for easy reference.
 - ii. Site Development Plan showing technical description, boundaries, orientation and position of proposed building/structure in relation to the lot, existing or proposed access road and driveways and existing public utilities/services. Existing buildings within and adjoining the lot shall be hatched and distances between the proposed and existing buildings shall be indicated.
 - iii. Perspective drawn at a convenient scale and taken from a vantage point (bird's eye view or eye level).
 - iv. Floor Plans drawn to scale of not less than 1:100 showing: gridlines, complete identification of rooms or functional spaces.

- v. Elevations, at least four (4), same scale as floor plans showing: gridlines; natural ground to finish grade elevations; floor to floor heights; door and window marks, type of material and exterior finishes; adjoining existing structure/s, if any, shown in single hatched lines.
- vi. Sections, at least two (2), showing: gridlines; natural ground and finish levels; outline of cut and visible structural parts; doors and windows properly labeled reflecting the direction of opening; partitions; built-in cabinets, etc.; identification of rooms and functional spaces cut by section lines.
- vii. Reflected ceiling plan showing: design, location, finishes and specifications of materials, lighting fixtures, diffusers, decorations, air conditioning exhaust and return grills, sprinkler nozzles, if any, at scale of at least 1:100.

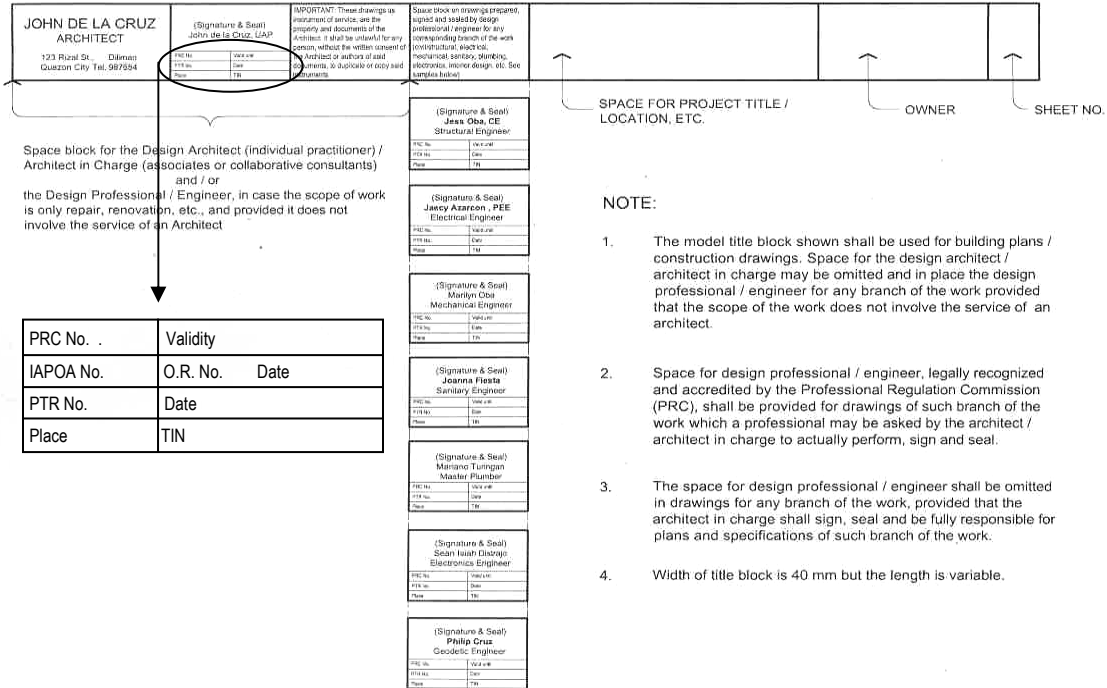


SIZES OF DRAWING SHEETS		
TYPE	W* (mm)	L** (mm)
A0	841	1189
A1	594	841
A2	420	594
A3	297	420

NOTE:
FOR EXTRAORDINARY CASES SUCH AS PROJECTS OF LARGE MAGNITUDE, EXEMPTION IN THE USE OF STANDARD SHEET MAY BE GRANTED BY THE BUILDING OFFICIAL ON CASE TO CASE BASIS.

STANDARD FORM (Type A0, A1, A2 and A3) FOR BUILDING PLANS / CONSTRUCTION DRAWINGS

Figure III.1.



MODEL TITLE BLOCK FOR BUILDING PLANS/CONSTRUCTION DRAWINGS

Figure III.2.

viii. Details, in the form of plans, elevations/sections:

- (a) Accessible ramps
- (b) Accessible stairs
- (c) Accessible lifts/elevators
- (d) Accessible entrances, corridors and walkways
- (e) Accessible functional areas/comfort rooms
- (f) Accessible switches, controls
- (g) Accessible drinking fountains
- (h) Accessible public telephone booths
- (i) Accessible audio visual and automatic alarm system
- (j) Accessible access symbols and directional signs
- (k) Reserved parking for disabled persons
- (l) Typical wall/bay sections from ground to roof
- (m) Stairs, interior and exterior
- (n) Fire escapes/exits
- (o) Built-in cabinets, counters and fixed furniture
- (p) All types of partitions

ix. Schedule of Doors and Windows showing their types, designations/marks, dimensions, materials, and number of sets.

x. Schedule of Finishes, showing in graphic form: surface finishes specified for floors, ceilings, walls and baseboard trims for all building spaces per floor level.

xi. Details of other major Architectural Elements.

a. Architectural Interiors/Interior Design

i. Space Plan/s or layout/s of architectural interior/s.

- ii. Architectural interior perspective/s.
 - iii. Furniture/furnishing/equipment/process layout/s.
 - iv. Access plan/s, parking plan/s and the like.
 - v. Detail design of major architectural interior elements.
 - vi. Plan and layout of interior, wall partitions, furnishing, furniture, equipment/appliances at a scale of at least 1:100.
 - vii. Interior wall elevations showing: finishes, switches, doors and convenience outlets, cross window sections with interior perspective as viewed from the main entrance at scale of at least 1:100.
 - viii. Floor/ceiling/wall patterns and finishing details.
 - ix. List of materials used.
 - x. Cost Estimates.
- b. Plans and specific locations of all accessibility facilities of scale of at least 1:100.
- c. Detailed design of all such accessibility facilities outside and around buildings/structures including parking areas, and their safety requirements all at scale of 1:50 or any convenient scale.
- d. Fire Safety Documents
- i. Layout plan of each floor indicating the fire evacuation route to safe dispersal areas, standpipes with fire hose, fire extinguishers, first aid kits/cabinets, fire alarm, fire operations room, emergency lights, signs, etc.
 - ii. Details of windows, fire exits with grilled windows and ladders.
 - iii. Details of fire-resistive construction of enclosures for vertical openings.
 - iv. Details of fire-resistive construction materials and interior decorative materials with fire-resistive/fire-retardant/fire-spread ratings
 - v. Other Related Documents
- f. Other related documents

Attachment "1.2" follows.